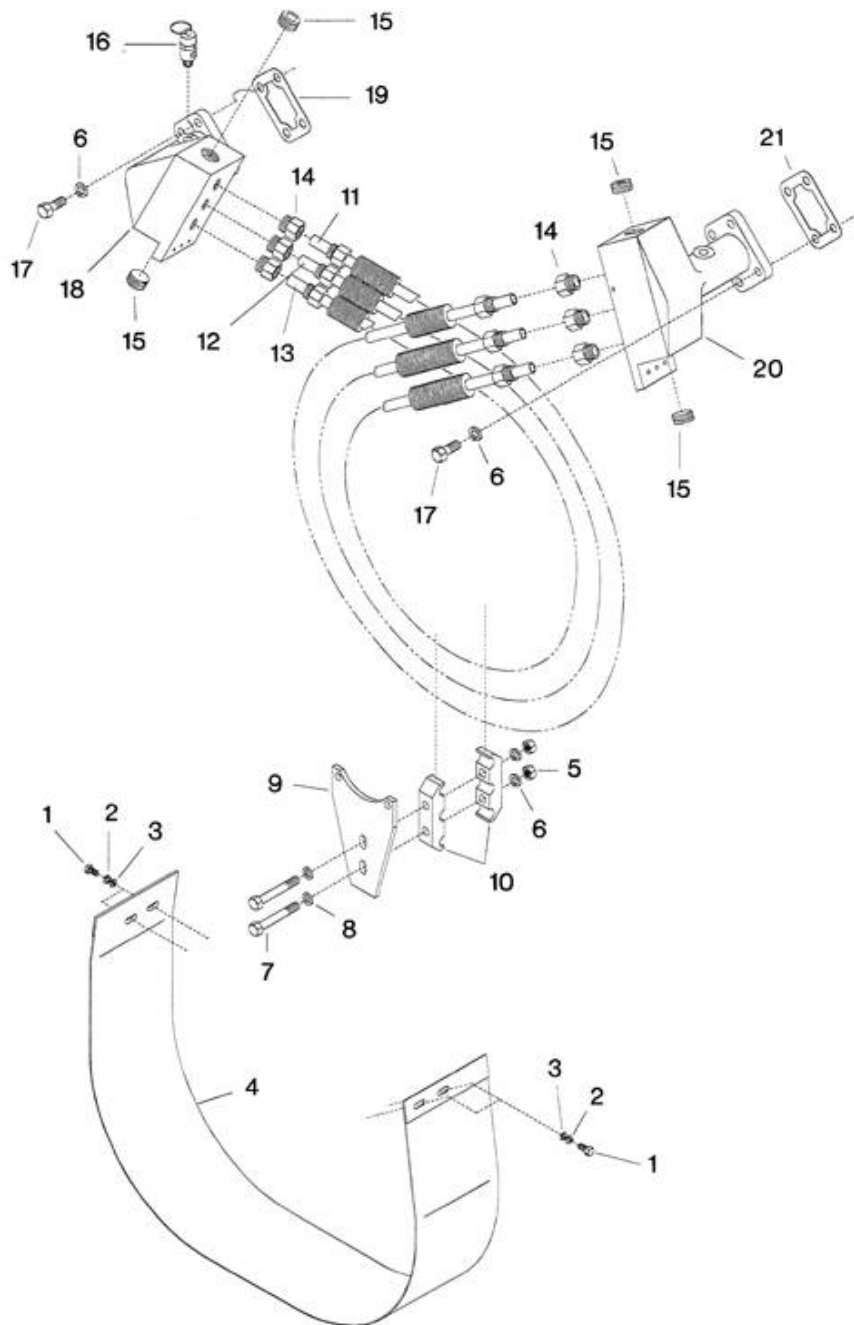


## 7. Intercooler & Shroud Assembly - Model 7100



All manufacturer's names, numbers, photos, product description and/or part numbers are used for reference purposes only & it is not implied that any part listed is the product of these manufacturers. Since Approvement are made from time to time, the illustration and specifications are subject to change without notice.

## 7. Intercooler & Shroud Assembly - Model 7100

| REF. NO. | PART NO. | DESCRIPTION                                  | QTY. | SPARES |   |   |
|----------|----------|--|------|--------|---|---|
|          |          |  |      | 1      | 2 | 3 |
| 7-1      | 95053070 | CAPSCREW, HEX HEAD-1/4-20X1/2" (IF PROVIDED) | 4    |        |   |   |
| 7-2      | 95043196 | LOCKWASHER, SPRING - 1/4" (IF PROVIDED)      | 4    |        |   |   |
| 7-3      | 95094298 | WASHER, FLAT - 1/4" (IF PROVIDED)            | 4    |        |   |   |
| 7-4      | 32205361 | SHROUD, INTERCOOLER (IF PROVIDED)            | 1    |        |   |   |
| 7-5      | 95077764 | NUT, HEX - 3/8-16                            | 2    |        |   |   |
| 7-6      | 95081857 | LOCKWASHER, SPRING - 3/8"                    | 10   |        |   |   |
| 7-7      | 95079646 | CAPSCREW, HEX HEAD - 3/8-16X2-1/2"           | 2    |        |   |   |
| 7-8      | 95069597 | WASHER, FLAT - 3/8"                          | 2    |        |   |   |
| 7-9      | 32175010 | BRACKET, INTERCOOLER                         | 1    |        |   |   |
| 7-10     | 32165367 | CLAMP, INTERCOOLER TUBE - OUTER              | 2    |        |   |   |
| 7-11     | 32196941 | ASS'Y, INTERCOOLER TUBE - FINNED - #3        | 1    |        | 1 | 2 |
| 7-12     | 32196933 | ASS'Y, INTERCOOLER TUBE - FINNED - #2        | 1    |        | 1 | 2 |
| 7-13     | 32196925 | ASS'Y, INTERCOOLER TUBE - FINNED - #1        | 1    |        | 1 | 2 |
| 7-14     | 95083226 | CONNECTOR, MALE - 5/8 X 1/2"                 | 6    |        |   |   |
| 7-15     | 95101457 | PLUG, PIPE - SQUARE COUNTERSUNK - 1"         | 4    |        |   |   |
| 7-16     | 72062185 | VALVE, RELIEF - 80 PSIG                      | 2    |        |   | 2 |
| 7-17     | 95079612 | CAPSCREW, HEX HEAD - 3/8-16X1"               | 8    |        |   |   |
| 7-18     | 32177313 | MANIFOLD, INTERCOOLER - LOW PRESSURE         | 1    |        |   |   |
| 7-19     | 32153801 | GASKET, MANIFOLD - LOW PRESSURE              | 2    | 1      | 1 | 2 |
| 7-20     | 32177347 | MANIFOLD, INTERCOOLER - HIGH PRESSURE        | 1    |        |   |   |
| 7-21     | 32153827 | GASKET, MANIFOLD - HIGH PRESSURE             | 1    | 1      | 1 | 2 |

All manufacturer's names, numbers, photos, product description and/or part numbers are used for reference purposes only & it is not implied that any part listed is the product of these manufacturers. Since Approvement are made from time to time, the illustration and specifications are subject to change without notice.